

Blarren

Jefferson City, Montana

Jefferson County



17.2 Acres For \$178,900

Jefferson City, Montana, Jefferson County

Montana land in the mountains bordering BLM land with elk and deer, and level meadow to build a cabin on with amazing Montana views near Helena, Montana.



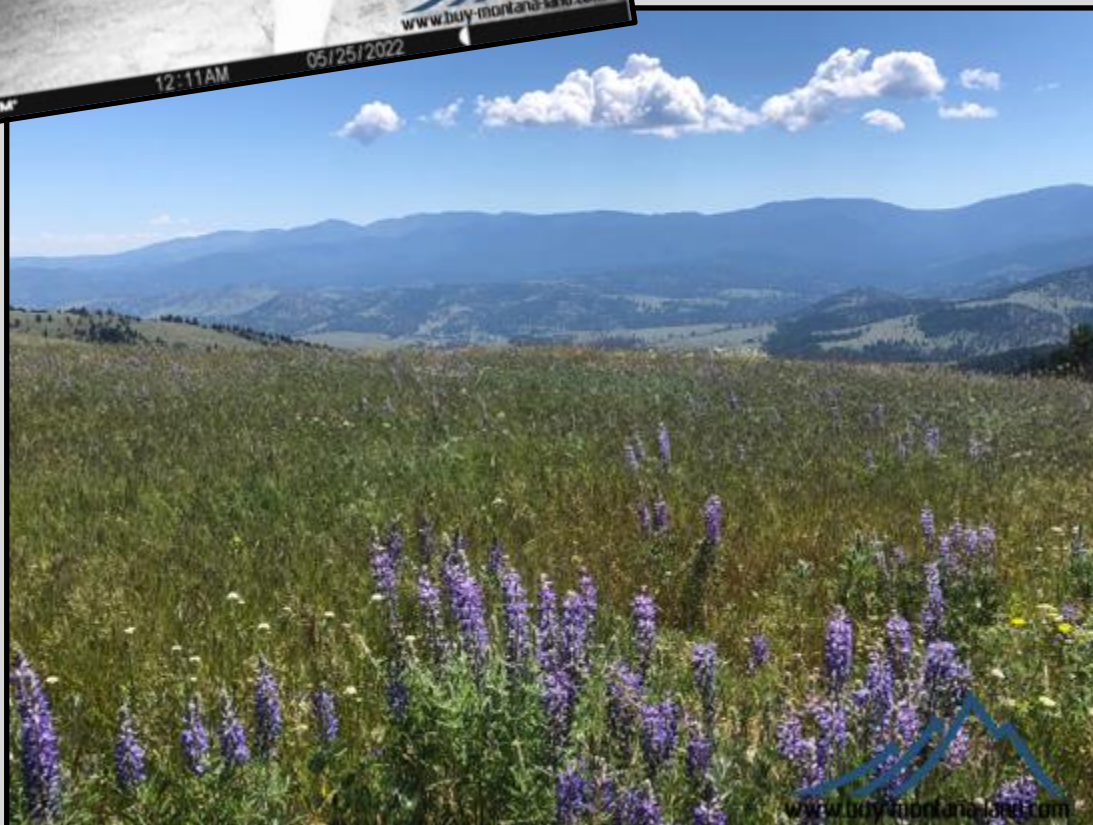
This great Montana mountain touches BLM land so you've got land right out your back door to hunt, hike, and enjoy. It's bonus land right next to your property that you don't even have to pay for to take advantage of. There's a good elk herd in the area that live on the property and adjacent BLM lands as you'll see from all the elk sign on the property and the trail camera pictures. Pick your spot out on the flat meadows on the property for your cabin and point your picture windows towards the views you like the best. The views of the Elkhorn Mountains and valleys below are truly incredible. You'll be able to see elk and deer on the surrounding hillsides and glass for them for miles on all the meadows you can see right from the cabin site.





Build your Montana cabin or just pull in your camper and get back to nature for weekend get-a-ways and build later whenever you're ready. And there's no covenants or restrictions attached to the property either, so just come relax and enjoy. You can see for miles and miles and you're looking down on everybody and everything else from your property in the mountains.

If you like to hunt, the property is in Hunting District 335 where there's general over-the-counter deer and elk tags as well as a second cow elk tag that can be drawn since there are so many elk in the hunting district. So, there's lots of opportunity year after year.





And you're just across the highway from the fabled Hunting District 380 in the Elkhorn Mountains with its limited elk permits and huge bulls. These elk cross the highway too which might put them right in your back yard where you can be ready to hunt the big ones. You can hunt on the property and the adjacent BLM land and nearby Block Management Area or take a short drive to the National Forest lands that sit up behind the property in the mountains to the west. Living here will give you easy access to lots and lots of public lands nearby.



The property is about half of a mile on a private gated road with deeded easements to the property. From the private gate it's only about 2½ miles of gravel county road and 1½ miles of paved county road to Jefferson City and Interstate 15. From there it's an easy commute to Helena, Montana which is only about 20 miles from the property. Helena is the capitol city of Montana with its university, airport, and all the amenities located near the center of Montana. Power is about 4 miles away, so this is an off-the-grid property with phone and a Northwestern Energy natural gas line about half a mile away back down at the county road.



Properties with this kind of setting and views bordering BLM land with National Forest land nearby and all the wildlife in such a desirable location are hard to find. This property is for sale by owner so call today at 406-461-6779 to purchase this great Montana property before somebody else does.

